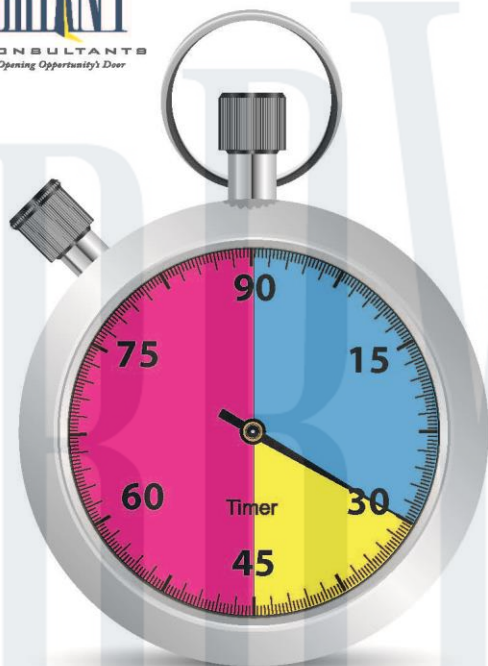


## Hygiene Time Allocation

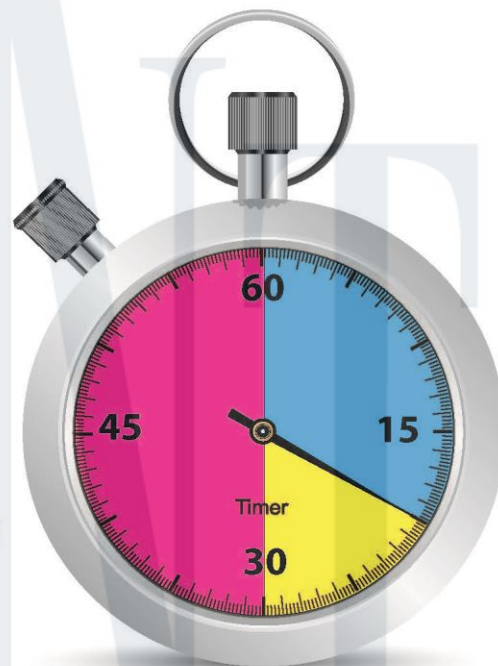


### New Patient Hygiene Process

- Screenings (30 Minutes)
- Exam (15 Minutes)
- Cleaning or Consult (45 Minutes)

### The 5 Screenings:

- 1) Risk Assessment
- 2) Periodontal
- 3) Oral Cancer
- 4) Restorative
- 5) Occlusal



### Recall Hygiene Process

- Screenings (20 Minutes)
- Exam (10 Minutes)
- Cleaning (30 Minutes)